

Proportional Flow Control Valve SRCA Series

- Sets up the working speed of hydraulic actuators
- Load independent and pressure compensated setting
- Higher pressure available at either the constant flow or surplus flow port with a 3-way valve
- 2-way valves do not need surplus-flow drilling - just plug in the valve
- Unique orifice design ensures flow setting is mainly independent of the viscosity of the fluid
- Change the flow ratings on-site by adding or removing orifice plugs
- Cartridge construction designed to meet precise requirements



Features

- Use it as a 2-way or 3-way valve
- Excellent pressure compensation, repeatability, and hysteresis
- Low-pressure loss (5 bar compensator spring)
- Additional tank port to direct spool leakage directly to the tank
- Low control current
- Easy-to-use single turn manual override available as an option
- ZnNi plated for corrosion resistance

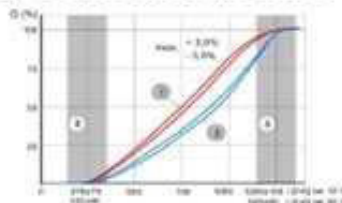
Technical

General Characteristics	Unit	Description, Value
Flow Direction		P → A Controlled P → B Surplus flow discharge (can be pressurized)
De-energized position		Orifice Closed
Electrical Characteristics	Unit	Description, Value
Supply voltage	VDC	12 or 24 from an electronic controller
Power consumption	Watt	Proportional Operation 16 with 12 V and $I_{max} = 1350\text{mA}$ 16 with 24 V and $I_{max} = 675\text{mA}$ ON/OFF operation: 27 with 12 V / 24 V
Dither frequency recommended	Hz	100
Protection class (with a properly-fitted plug)		DIN plug IP65 AMP Junior Timer IP65 Deutsch plug IP67
Hydraulic Characteristics	Unit	Description, Value
Constant Flow Range	l/min	10, 16, 25, 32, 40, 50 ¹
Inlet Flow	l/min	Max. 60 ¹
Operating Pressure	bar	Max. 250
Leakage	CM ³ /min	Max. 60 at 60 bar ¹ (or virtually zero if the priority flow discharges to tank)

Applications

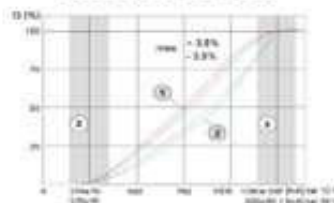
- Belt Drives
- Spinner-Plate Drives
- Auger Drives
- Brush Drives
- Reel Drives
- Liquid Pump Drives

Q - I Characteristic Curve



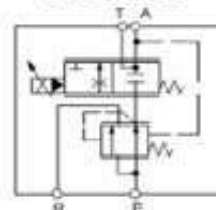
- 1 Q - I characteristic at 50 L
- 2 Q - I characteristic at 25 L
- 3 Fine control range

Variation in Flow



- 1 QA - constant flow pressurized
- 2 QB - surplus flow pressurized

Schematic



Technical Data Sheet



JEM Technical is an Authorized Distributor



JEM Technical
550 N Old Crystal Bay Road
Orono, MN 55356
(952)-473-5012
INFO@JEMTECHNICAL.COM
www.Jemtechnical.com



JEM Technical
60 De Baets St
Winnipeg, MB R2J 3S9
(204)-654-1743
INFO@JEMTECHNICAL.COM
www.Jemtechnical.ca.com