

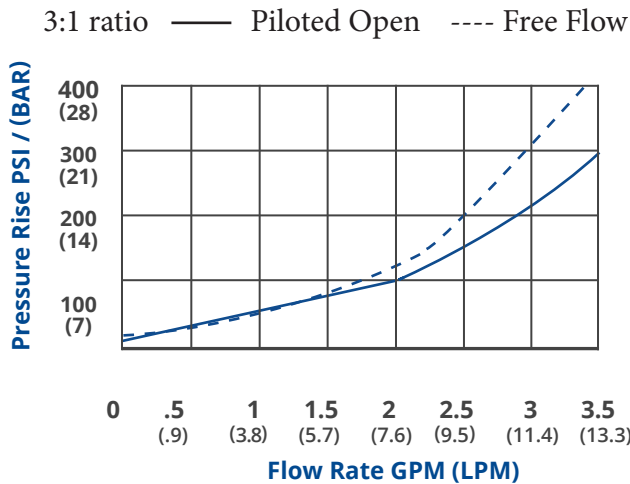
Description:

A cartridge style counterbalance valve with internally vented spring chamber and a reverse flow check. Intended for use as a motion control and over-center load holding valve.

Features:

- Common pilot ratios 3:1, 4:1, 8:1
- Sealed pilot piston for low leakage
- Quiet stable operation
- Low hysteresis
- Zinc plated exposed steel parts
- Anodized aluminum body for corrosion protection
- Standard setting is 3000 PSI
(Other settings can be specified, see model code on back.)

Flow Characteristics (32 CST / 150 SUS oil at 40C)



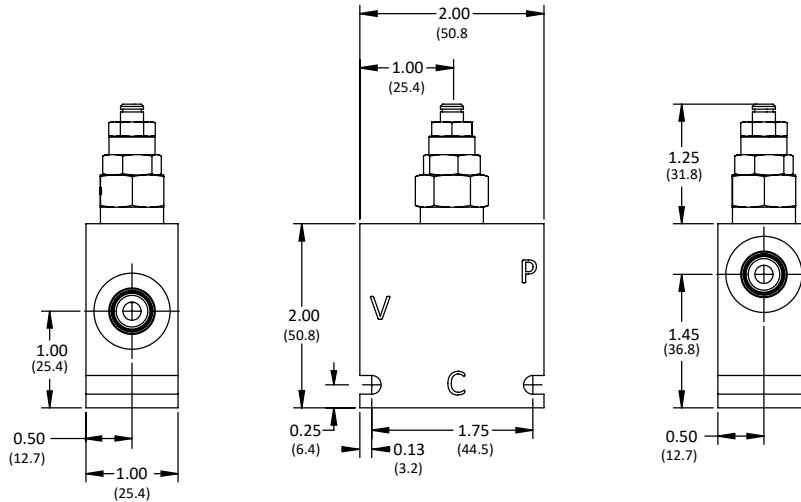
Specifications:

Maximum pressure (Aluminum body)	3000 PSI (207 BAR)
Maximum setting	5000 PSI (345 BAR)
Maximum flow	3 GPM (12 LPM)
Port size	SAE-04
Body material	Aluminum
Cartridge material	Steel
Filtration	ISO 4406
Fluids	Mineral based or synthetics 50-2000 SUS
Seal type	Buna N
Approx. weight	.5 Lbs

The data and application materials contained herein are furnished for information only and believed to be reliable. Questions regarding specific applications or performance should be directed to JEM's application department. Since our products are being continuously improved, data contained herein is subject to change without notice. Warranty on FastLine products is 1 year from the date of sale.



Installation Dimensions:



() Parentheses = Millimeters

How To Order:

Example model code is the in-stock FastLine solution

CBV061 A - 304T _ - 3 - 30

Base Part No.
Adjustment Type:
 A = 1/8" Hex Allen Head
3 Ports
 Size SAE 04
Pilot Ratio:
 3 = 3:1
 4 = 4:1
 8 = 8:1
Body Material:
 Omit = Aluminum
 D = Ductile *
CBV Setting = PSI ÷ 100
 Std. adjustment range: 500-3000 PSI

Not all Pilot ratios are available from stock. 3:1 ratio is the standard offering.
 *Ductile bodies have limited availability. Ductile bodies are recommended for working pressures over 3000 PSI.

Optional Ratios 4:1 & 8:1

