

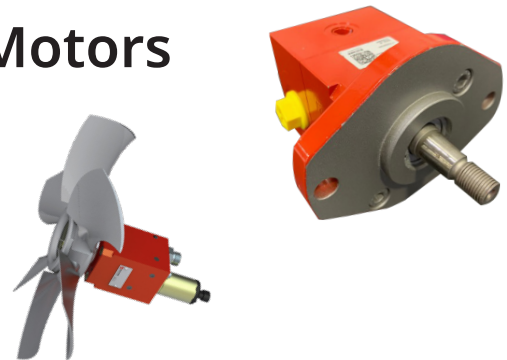
## QXM12 & QXM22 Internal Gear Motors

### Long, Reliable Service Life

- High reliability
- Low noise
- Stable shaft design
- Integrated anti-cavitation, inverse proportional relief and speed sensor options available
- Integrated outboard bearing

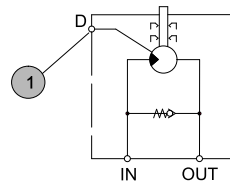
### Features

- Integral extra-support bearing for high external forces (one-shaft-solution)
- Easier starting of the motor, no "stick-slip-effect"
- Speed sensor can be integrated
- Integral anti-cavitation valve
- Integral directional control valve

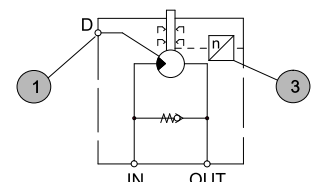


### Model Code Example

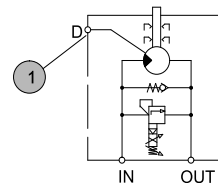
**QXM22-00..L-KA22M22V5P2**  
Includes anti-cavitation valve and external drain port



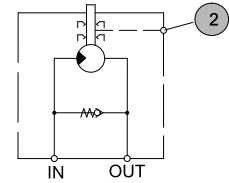
**QXM22-00..R-KA22M22V6P7**  
Includes anti-cavitation valve, external drain port, and speed sensor



**QXM22-00..R-KAT8U34V7P4**  
Includes pressure relief valve, anti-cavitation valve, and external drain port



**QXM22-00..R-SA22M22V5P6**  
Includes anti-cavitation valve, without external drain port



- 1 External drain port
- 2 Fitting for hose
- 3 Speed sensor

### Applications

- Blower drives (seed drills, road sweepers)
- Fan drives (tractor)
- Generator drives (towed machines)
- Compressor drives (construction machines to air conditioning systems)

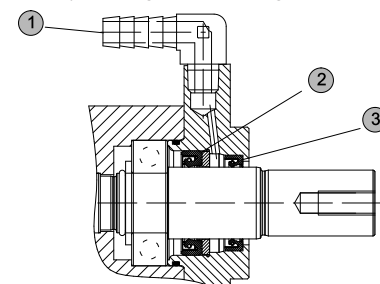
### Technical Data

| Type       | Displacement<br>(Effective)<br>[cm <sup>3</sup> /rev] | Motor Speed [rpm] |                 | Operating Pressure<br>Maximum [bar] | Torque **<br>[Nm] |
|------------|---|-------------------|-----------------|-------------------------------------|-------------------|
|            |   | Maximum Speed     | Minimum Speed * |                                     |                   |
| QXM12-0025 | 2,5   | 6000              | 1500            | 210                                 | 8,3               |
| QXM12-0030 | 3,0   |                   |                 |                                     | 10,0              |
| QXM12-0035 | 3,5   |                   |                 |                                     | 11,7              |
| QXM12-0040 | 4,1   |                   |                 |                                     | 13,4              |
| QXM22-0050 | 5,1   |                   |                 |                                     | 16,7              |
| QXM22-0063 | 6,3   |                   |                 |                                     | 20,0              |
| QXM22-0080 | 8,0   |                   |                 |                                     | 26,7              |

\* For continuous operation at maximum operating pressure.  
\*\*Theoretical value at maximum operating pressures.

### Option

**Leakage Oil Safety Tell-Tale Connection**  
Seal combination for ultra-high protection against external leakage



- 1 Fitting for hose with inside diameter 10mm
- 2 Primary radial shaft seal ring
- 3 Secondary radial shaft seal ring



**JEM Technical**  
550 N. Old Crystal Bay Road  
Orono, MN 55356  
p: 888.256.8266  
www.info@jemtechnical.com

**JEM Technical**  
60 De Baets Street  
Winnipeg, MD R2J359 Canada  
p: 204.654.1743  
www.info.ca@jemtechnical.com

**Contact JEM Technical to see how this can become your Smart Solution today!**