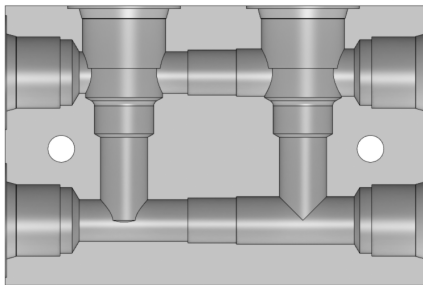


Description:

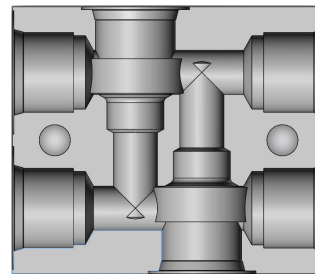
Manifold bodies for two common cavity cartridge valves. The DCBP has the two cavities in parallel and the DCBX has the cavities on opposite work ports. With a variety of cartridges available many circuits can be created with these simple bodies.

Features:

- Parallel body available for VC08 to VC16 cavities
- Cross-port body available for VC08 to VC10 cavities
- Cavities based on HydraForce specifications
- Standard rated pressure 3000 PSI
- Anodized aluminum bodies for corrosion protection



DCBP
Parallel cavities



DCBX
Cross-Port cavities

How To Order:



Example model code is an in-stock FastLine solution

DCB P 10 0 - 08T _

Base Part No. | | | | |
Body type:
P= Parallel cavities
X= Cross-Port cavities

Cavity size:
VC08 = 08
VC10 = 10
VC12 = 12
VC16 = 16

Plug location options:
Parallel body only
0 = no internal plugs
1 = plug between 2 & 3
2 = plug between 1 & 4
3 = both plugs installed

Body material:
Omit = Aluminum
D = Ductile *

Port Size:
06T = SAE 06, Standard for DCB-08
08T = SAE 08, Standard for DCBP-10
10T = SAE 10, Standard for DCBX-10
12T = SAE 12, Standard for DCBP -12
16T = SAE 16, Standard for DCBP-16

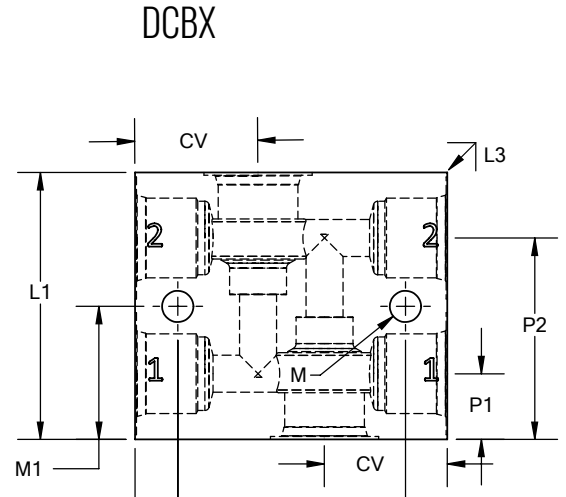
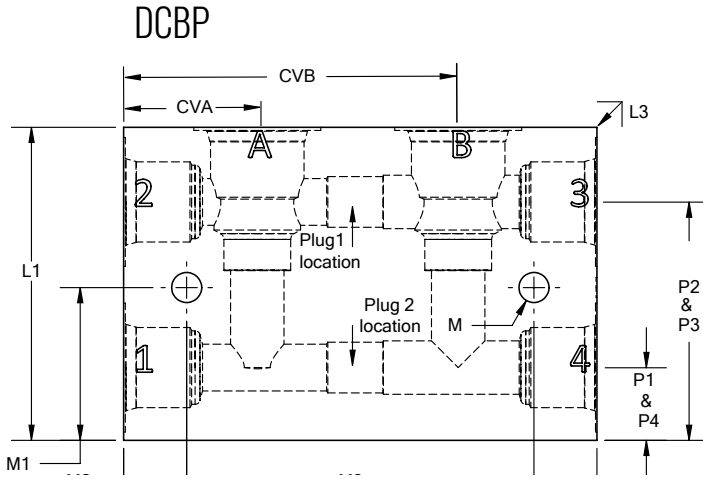
Not all combinations are available as standard bodies. Mounting holes may vary with cavity or port size.
*Ductile bodies have limited availability. Ductile bodies are recommended for working pressures over 3000 PSI.

JEM Technical
(888) 256-8266
www.jemtechnical.com



JEM Technical Canada Ltd.
(204) 654-1743
www.jemtechnical.ca

Installation Dimensions:



DCBP Dimensions

Body	DCBP08	DCBP10	DCBP12	DCBP16
L1	2.43 (61.7)	2.93 (74.4)	3.93 (99.8)	4.43 (127.0)
L2	3.93 (99.8)	4.43 (112.5)	5.93 (150.6)	5.93 (101.6)
L3	1.43 (36.3)	1.43 (36.3)	1.93 (49.0)	2.43 (50.8)
MØ	Ø 0.281 (7.1)	Ø 0.281 (7.1)	Ø 0.41 (10.3)	Ø 0.41 (10.3)
M1	1.21 (30.7)	1.43 (36.3)	1.98 (50.3)	2.31 (58.7)
M2	0.47 (11.9)	0.59 (15.0)	0.65 (16.5)	0.65 (16.5)
M3	3.00 (76.2)	3.25 (82.6)	4.62 (117.3)	4.62 (117.3)
P1	0.55 (14.0)	0.68 (17.2)	0.98 (24.9)	0.98 (24.9)
P2	1.86 (47.2)	2.23 (56.6)	2.93 (74.4)	2.98 (75.7)
P3	1.86 (47.2)	2.23 (56.6)	2.93 (74.4)	2.98 (75.7)
P4	0.55 (14.0)	0.68 (17.2)	0.98 (24.9)	0.98 (24.9)
CVA	1.03 (26.2)	1.25 (31.75)	1.85 (47.0)	1.85 (47.0)
CVB	2.90 (76.7)	3.13 (79.5)	4.12 (104.6)	4.12 (104.6)

DCBX Dimensions

Body	DCBX08	DCBX10
L1	2.43 (61.7)	2.93 (74.4)
L2	2.93 (74.4)	3.43 (87.11)
L3	1.25 (31.8)	1.43 (36.3)
MØ	Ø 0.34 (8.6)	Ø 0.34 (8.6)
M1	1.22 (31.0)	1.46 (37.1)
M2	0.47 (11.9)	0.47 (11.99)
M3	2.00 (50.8)	2.50 (63.5)
P1	0.60 (15.2)	0.72 (18.3)
P2	1.83 (46.5)	2.21 (56.1)
CV	1.12 (28.5)	1.35 (34.3)

() Parentheses = Millimeters

All ports are in the center of the body

*Ductile bodies may be dimensionally different

() Parentheses = Millimeters

All ports are in the center of the body

*Ductile bodies may be dimensionally different

The data and application materials contained herein are furnished for information only and believed to be reliable. Questions regarding specific applications or performance should be directed to JEM's application department. Since our products are being continuously improved, data contained herein is subject to change without notice. Warranty on FastLine products is 1 year from date of sale.